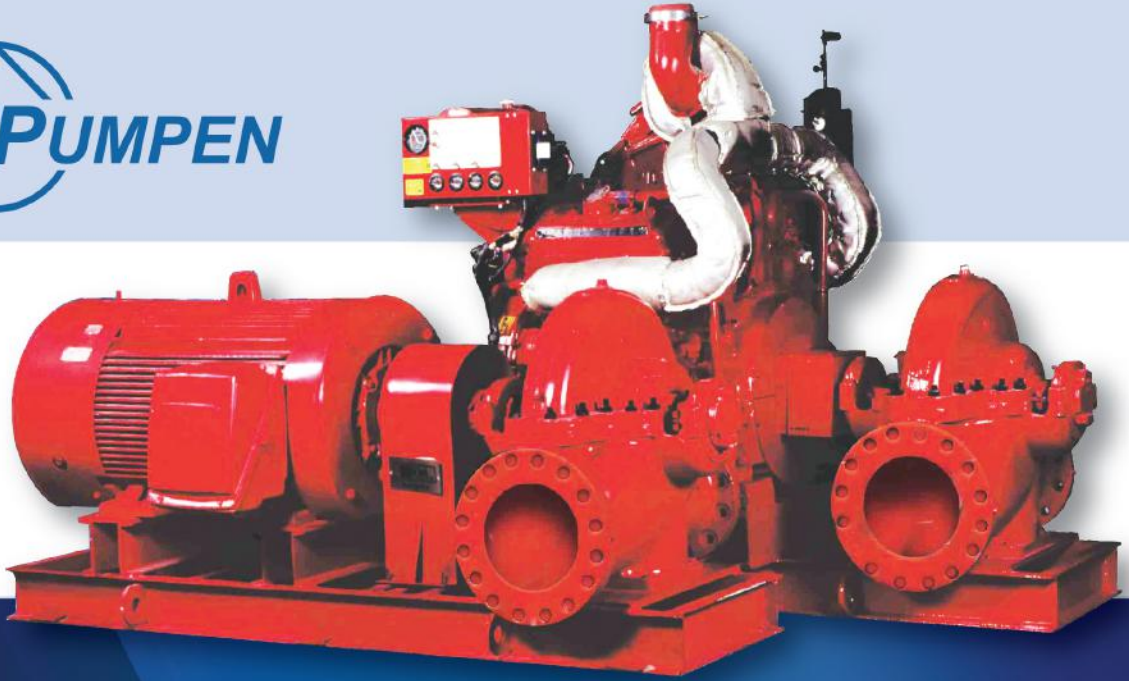




الشركة الدولية لأنظمة الأمن والسلامة  
Int. Security & Safety Systems Co.

**RUHRPUMPEN**



## Fire Fighting Pumps

**UL - Listed, NFPA-20 Compliant**

**HORIZONTAL SPLIT CASE  
EGY-HSL and EGY-ZW Range  
(150-5000 gpm)**



## INTRODUCTION

With years of extensive experience in the field of firefighting pump systems, ISS has completed its range introducing the EGY-HSL and EGY-ZW ranges of Horizontal Split Case fire pumps with ranges up to 5,000gpm. Matching the needs of high-hazard applications for the Oil & Gas, Petrochemical, Transportation, Strategic/Military, Chemical, Power and most Industrial verticals, the range provides a complete solution for almost any demand. The entire range is provided at 50 as well as 60-cycles to serve specific markets within the region that require so.



### QXJY .EX28022 - CENTRIFUGAL FIRE PUMPS, SPLITCASE



#### Centrifugal Fire Pumps, Split Case

See General Information for Centrifugal Fire Pumps, Split Case

EX28022

INTERNATIONAL SECURITY & SAFETY SYSTEMS CO-S.A.E  
49 ABBASSEL AKKAD ST  
NASR CITY, CAIRO, EGYPT  
Fire pumps, single-stage

Rated Capacity GPM	Size in.	Model Dsg	Rated Net Pressure Range psi	Approx Speed RPM	Max Working Pressure psi
150	4x3	EGY-HSL 3x4x10 A	223-125	3550	250
150	4x3	EGY-HSL 3x4x10 A	161-90	3000	250
150	4x3	EGY-HSL 3x4x10 A	140-80	2800	250
200	4x3	EGY-HSL 3x4x10 A	222-125	3550	250
200	4x3	EGY-HSL 3x4x10 A	159-90	3000	250
200	4x3	EGY-HSL 3x4x10 A	138-78	2800	250
200	4x3	EGY-HSL 3x4x10 A	122-66	2600	250
200	4x3	EGY-HSL 3x4x10 A	99-53	2350	250
200	4x3	EGY-HSL 3x4x10 A	77-41	2100	250
250	4x3	EGY-HSL 3x4x10 A	221-125	3550	250
250	4x3	EGY-HSL 3x4x10 A	157-88	3000	250
250	4x3	EGY-HSL 3x4x10 A	136-75	2800	250
250	4x3	EGY-HSL 3x4x10 A	119-65	2600	250
250	4x3	EGY-HSL 3x4x10 A	98-52	2350	250
250	4x3	EGY-HSL 3x4x10 A	75-55	2100	250
300	4x3	EGY-HSL 3x4x10 A	221-123	3550	250
300	4x3	EGY-HSL 3x4x10 A	155-86	3000	250
300	4x3	EGY-HSL 3x4x10 A	134-73	2800	250

With the same level of attention to details and adherence to codes and standards, ISS has been awarded UL Listing on the range for up to 5,000gpm. The entire range is UL listed and comes complete with the same major components of electric motor, diesel engine, fire pump controllers and all accessories that grant the entire package UL approved. The complete same package with exact components can be provide in UL and FM approved product by shipping through Mexico.

Tried and tested in some of the toughest of installation, applications and clients, the range provides a very flexible selection of flow and pressure with proven performance across the last decade in "the country of EGYPT".

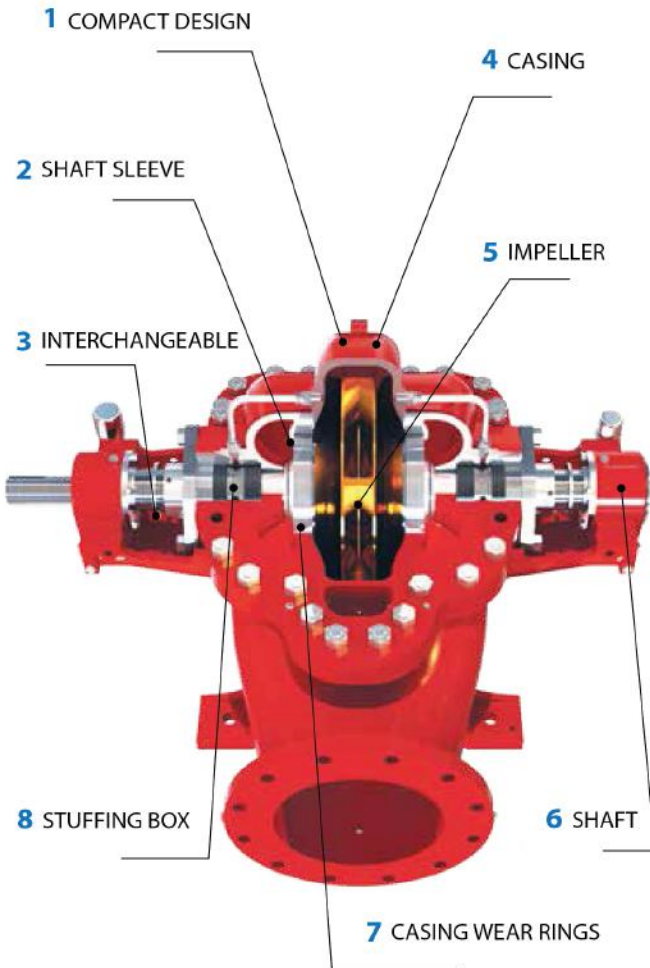


# FIRE PUMPS

## Horizontal Split Case

### CHARACTERISTICS

Ruhrpumpen also designs offshore Fire Pump Systems with ABS certification for floating offshore facilities.



Images for general arrangement use only, not certified for construction.

### HOIZONTAL SPLIT CASE PERFORMANCE DATA

Capacity	up to 1136 m <sup>3</sup> /h	5,000 U.S. gpm
Head	up to 204 m	670 ft
Pressure	up to 20 bar	290 psig
Temperature	10° to 105 °C	50 ° to 220°F

### DESCRIPTION

Single Stage Horizontal Split Case Pumps

#### COMPACT DESIGN

Heavy shaft and short bearing span reduce shaft deflection to a minimum, providing longer packing and bearing life and lower maintenance costs, while requiring less floor space. Clockwise rotation standard; counter-clockwise rotation optional

#### SHAFT SLEEVE

Protects the shaft against corrosion and wear, extends through gland for maximum shaft protection

#### INTERCHANGEABLE

Radial and Thrust Bearings with grease lubrication are (conservatively rated at 100,000 hrs "Plus" Bearing Life) guaranteed, maximum life at minimum maintenance cost

#### CASING

Upper and lower half bolted and dowelled to provide perfect alignment. Bearing supports are cast and bored integrally with lower-half casing. Upper half casing can be removed for inspection, without disturbing bearings or alignment. Flanged suction and discharge connections are located in the lower-half casing

#### IMPELLER

Enclosed, double-suction. Cast in one-piece and balanced to minimize thrust and to ensure longer bearing life. Locked in position by threaded shaft sleeves

#### SHAFT

Larger-diameter, precision-machined, high strength steel shaft for maximum strength with minimum shaft deflection

#### CASING WEAR RINGS

Close running clearance minimizes pressure leakage between suction and discharge chambers of the casing, maximizes efficiency and are easily replaceable

#### STUFFING BOX

Designed to accept a minimum of five rings of packing with lantern ring. Internally drilled liquid passage in upper-half casing provides lubrication to the packing area

### DESIGN FEATURES

- NFPA - 20
- UL - 448
- Special design available on request

## UL Listed Range Horizontal Split Case Fire Pumps range

\*(3000) RPM.

UL-Listed Range at (3000) RPM								
Rated Capacity GPM (M3/H)	Pump Model	Pressure Range			Max Working	BHP	Recommended Electric Motor	Recommended Diesel Engine
		Psi	Bar	Speed RPM	Pressure Psi			
150 (34 M3/H)	EGY-HSL 3x4x10 A	91.76	6.3	3000	250	24	25	45
		105	7.2	3000	250	26.8	25	45
		116	8.0	3000	250	29.4	30	45
		130	9.0	3000	250	32.7	30	45
		145	10.0	3000	250	36.9	40	45
		161	11.1	3000	250	37.8	40	45
200 (45 M3/H)	EGY-HSL 3x4x10 A	90	6.2	3000	250	28	30	45
		105	7.2	3000	250	31	30	45
		125	8.6	3000	250	36.6	40	45
		135	9.3	3000	250	39.4	40	45
		145	10.0	3000	250	42.5	40	45
		147.1	10.1	3000	250	43.2	40	45
250 (56 M3/H)	EGY-HSL 3x4x10 A	91.78	6.3	3000	250	32.4	30	45
		105	7.2	3000	250	36.1	40	45
		115	7.9	3000	250	39	40	45
		125	8.6	3000	250	41.8	40	45
		135	9.3	3000	250	45.1	50	50
		150	10.3	3000	250	50.3	50	50
300 (68 M3/H)	EGY-HSL 3x4x10 A	90.6	6.2	3000	250	35.4	40	45
		105	7.2	3000	250	40.1	40	45
		125	8.6	3000	250	46.6	50	50
		145	10.0	3000	250	54.2	50	50
500 (113 M3/H)	EGY-ZW 6x4x14 B	169	11.7	3000	430	100	100	115
		180	12.4	3000	430	106	100	115
		195	13.4	3000	430	116	125	145
		220	15.2	3000	430	132	150	145
		243.6	16.8	3000	430	146	150	145
		750 (170 M3/H)	EGY-ZW 6x5x14 F	158	10.9	2960	445	138
185	12.8	2960		445	169	200	175	
205	14.1	2960		445	189	200	216	
230	15.9	2960		445	217	200	216	
1000 (227 M3/H)	EGY-ZW 8x5x14 F	154	10.6	2960	465	157	150	175
		174	12.0	2960	465	180	200	216
		194	13.4	2960	465	203	200	216
		220	15.2	2960	465	234	250	275
		248	17.1	2960	465	268	300	275
1250 (283 M3/H)	EGY-ZW 8x6x12F	130	9.0	2960	465	179	200	216
		145	10.0	2960	465	198	200	216
		160	11.0	2960	465	216	200	216
		174	12.0	2960	465	233	250	275
1500 (340 M3/H)	EGY-ZW 10x6x12 F	135	9.3	2960	290	215	200	216
		145	10.0	2960	290	235	250	275
		175	12.1	2960	290	291	300	300
		190	13.1	2960	290	320	350	*
2000 (454 M3/H)	EGY-ZW 10x6x12 F	131	9.0	2960	290	238	250	275
		145	10.0	2960	290	268	250	275
		160	11.0	2960	290	301	300	300
		174	12.0	2960	290	332	350	*
		185	12.8	2960	290	358	350	*

\* Use 385 Hp Diesel engine at 1480 RPM

\* (1480 - 1775) RPM.

UL-Listed Range at (1480-1775) RPM								
Rated Capacity GPM (M3/H)	Pump Model	Pressure Range		Speed RPM	Max Working Pressure Psi	BHP	Recommended Electric Motor	Recommended Diesel Engine
		Psi	Bar					
2500 (567 M3/H)	EGY-ZW 12x10x24 F	116	8.0	1480	372	293	300	300
		130	9.0	1480	372	337	350	385
		145	10.0	1480	372	385	400	385
		160	11.0	1480	372	433	450	450
		179	12.3	1480	372	494	500	522
3000 (681 M3/H)	EGY-ZW 16x12x20FH	101	7.0	1480	305	339	350	385
		116	8.0	1480	305	390	400	450
		130	9.0	1750	305	479	500	495
		145	10.0	1750	305	536	*	542
		160	11.0	1750	305	591	*	600
		182	12.5	1750	305	673	*	700
3000 (681 M3/H)	EGY-ZW 12x10x24 F	116	8.0	1480	372	328	350	385
		130	9.0	1480	372	376	400	385
		160	11.0	1750	372	451	500	460
		189	13.0	1750	372	553	*	587
		217	15.0	1750	372	655	*	687
		250	17.2	1750	372	774	*	800
3500 (795 M3/H)	EGY-ZW 12x10x24 F	105	7.2	1480	372	328	350	385
		116	8.0	1480	372	360	350	385
		130	9.0	1480	372	411	400	450
		147	10.1	1750	372	450	500	460
		160	11.0	1750	372	492	500	495
		189	13.0	1750	372	607	*	650
		217	15.0	1750	372	721	*	755
		248	17.1	1750	372	849	*	875
3500 (795 M3/H)	EGY-ZW 16x12x20FH	101	7.0	1480	305	363	350	385
		116	8.0	1480	305	421	400	450
		130	9.0	1775	305	542	*	542
		145	10.0	1750	305	605	*	650
		160	11.0	1750	305	671	*	687
		180	12.4	1750	305	756	*	755
		186	12.8	1775	305	787	*	800
		101	7.0	1480	305	391	400	450
4000 (908 M3/H)	EGY-ZW 16x12x20FH	116	8.0	1480	305	454	450	522
		130	9.0	1775	305	542	*	542
		145	10.0	1750	305	606	*	650
		160	11.0	1750	305	671	*	687
		178	12.3	1750	305	748	*	755
		104	7.2	1480	305	430	450	450
4500 (1022 M3/H)	EGY-ZW 16x12x20FH	123	8.5	1750	305	541	*	542
		147	10.1	1750	305	655	*	687
		163	11.2	1750	305	728	*	755
		182	12.5	1775	305	819	*	875
		101	7.0	1480	305	450	450	450
5000 (1135 M3/H)	EGY-ZW 16x12x20FH	120	8.3	1750	305	557	*	587
		145	10.0	1750	305	683	*	687
		160	11.0	1750	305	757	*	755
		180	12.4	1775	305	861	*	875

\* No Listed Electric Motors for fire fighting above 500 HP

## ELECTRIC MOTORS



## DIESEL ENGINES



## FIRE PUMP CONTROLLERS



## ACCESSORIES



# Fire Fighting Pumps Projects



TCI - Sanmar - Portsaid



Air Force Hanger



Romania - Power Station



NCB - Packaged Pumps

## You can find our Products there

Saudi Arabia	Djibouti	Romania
UAE	Libya	Indonesia
Qatar	Tunisia	Iran
Kenya	Morocco	
Sudan	Greece	



## Other Products



UL-Listed Foam Bladder Tanks



UL-Listed Fire Fighting Foams



UL/FM Firefighting Range 250 - 1250 gpm



UL-Listed Foam Pump Skids



1989-2019

### HEAD OFFICE :

49 Abbas El Akkad st. - Nasr City - Cairo - Egypt

Tel : +202 ( 24017430 - 22602808 )

Fax : +202 ( 22627317 )

### FACTORY :

Al Obour Industrial Area Block 13040 - Zone A

Tel : +202 ( 46651240 ) Fax : +202 ( 46651241 )

E-mail : [info@issystems.com](mailto:info@issystems.com)

