



الشركة الدولية لأنظمة الأمن والسلامة
International Security & Safety Systems Co.

FOAM EXTINGUISHING SYSTEMS



Our History

- 1989** ISS has been serving industrial, commercial, government and oil & gas sites in the field of fire and security systems as a specialized contractor and agent for many international firms.
- 2001** ISS opened its manufacturing facility, located in AL OBOUR city, which provides blending foam concentrates, packaging of fire pumps approved by Egyptian civil defense and NRC, Co2/Dry powder systems, assembly and piping fabrication for firefighting systems.
- 2003** ISS has been awarded the first UL approval in Egypt & Africa on blending AFFF, AR/AFFF, and FP Foam concentrates under license from Chemguard-USA.
- 2012** ISS has been approved to package UL/FM fire pumps in Egypt, in the cooperation of EPE & PTEI.
- 2014** ISS has been awarded UL approval of aboveground tank for flammable liquids.
- 2015** ISS expands its UL/FM pump range to 2800 and 3560 RPM for 60 HZ. countries.
- 2016** ISS has been awarded the ASME certificate - "U-stamp" as a first step to apply on UL for bladder tanks.
- 2017** ISS was the first Egyptian factory to receive the UL listing on their ASME and CE Bladder tanks.
- 2019** ISS has been awarded UL/FM approval of range (24-420 GPM) Foam pump -OEM- with Firelion.
- 2020** ISS has been awarded ISO 9001:2015, ISO 14001:2015, ISO 45001:2018.
- 2021** ISS has been awarded UL Listed "AutoFirex" Cylinder for DLP System.
- 2022** ISS has been approved as "HYGOOD" FM200 Filling Station - UL/FM (First Fill/Refill).
- 2024** ISS has been awarded the UL Approval for blending AFFF, AR/AFFF, FP, FFFP, and AR/FFFP Foam Concentrates under license from FIRECHEM-INDIA.
- 2025** ISS has been awarded the UL/FM in cooperation with NMFIRE Pumps for (200-5000gpm) Fire pump package.
ISS has been approved as "HYGOOD" Sapphire Filling Station - UL/FM (First Fill/Refill).
ISS has received the UL Listing for Foam discharge devices (Foam Chambers and Foam Pourers).
ISS has received the UL Listing for Bladder Tanks with Free Flourine Foam in cooperation with JCI-International.

Specialized in:

- Fire Detection Systems.
- Flame & Gas Detection Systems.
- Automatic Sprinkler Systems.
- Foam Extinguishing Systems.
- Fire Pumps Packages.
- CO2 / FM200 / SAPPHIRE / INERGEN Systems.
- Dry Chemical Systems.

ISO Certificate



Proudly -Made in Egypt- Bladder tanks

Supported by TYCO-USA.
UL listed – ASME-EN (CE mark)

10/1/25, 4:43 PM GHXV,EX27357 - Proportioners, Foam Concentrate | UL Product iQ

UL Product iQ® 

Proportioners, Foam Concentrate

COMPANY
INTERNATIONAL SECURITY & SAFETY SYSTEMS CO-S A E
AL OBOUR INDUSTRIAL CITY
ZONE A (BLK 13040)
Cairo, Egypt

EX27357

View model for additional information

BLADDER TANK, Model(s): [EGY-CHBT_100 to 4000 gallon capacity ASME and CE bladder tanks for horizontal installation](#)

BLADDER TANK, Model(s): [EGY-CVBT_25 to 3000 gallon capacity ASME and CE bladder tanks for Vertical Installation](#)

Last Updated on 2025-01-07

The appearance of a company's name or product in this database does not in itself assure that products so identified have been manufactured under UL Solutions' Follow - Up Service. Only those products bearing the UL Mark should be considered to be Certified and covered under UL Solutions' Follow - Up Service. Always look for the Mark on the product.

UL Solutions permits the reproduction of the material contained in Product iQ subject to the following conditions: 1. The Guide Information, Assemblies, Constructions, Designs, Systems, and/or Certifications (files) must be presented in their entirety and in a non-misleading manner, without any manipulation of the data (or drawings). 2. The statement "Reprinted from Product iQ with permission from UL Solutions" must appear adjacent to the extracted material. In addition, the reprinted material must include a copyright notice in the following format: "©2025 UL LLC."



The American Society of Mechanical Engineers

CERTIFICATE OF AUTHORIZATION

The named company is authorized by The American Society of Mechanical Engineers (ASME) for the scope of activity shown below in accordance with the applicable rules of the ASME Boiler and Pressure Vessel Code. The use of the ASME Single Certification Mark and the authority granted by this Certificate of Authorization are subject to the provisions of the agreement set forth in the application. Any construction stamped with the ASME Single Certification Mark shall have been built strictly in accordance with the provisions of the ASME Boiler and Pressure Vessel Code.

COMPANY:
International Security & Safety Systems Co.
1 of 4 Al Oboour Industrial Area No. 1, B/G Block Z2009
Cairo N/A
Egypt

SCOPE:
Manufacture of pressure vessels at the above location only

AUTHORIZED: May 25, 2025
EXPIRES: May 25, 2028
CERTIFICATE NUMBER: 52519


 Gary L. Scribner
Board Chair,
Conformity Assessment


 Senior Director,
Engineering Operations

CE Compliance





Declaration of Compliance

This Declaration of Compliance is here by issued for the
Applicable Directive(s):
 2014/68/EU - Pressure Equipment Directive (PED)

In accordance with the following applicable standards:
 EN 13445-2:2014+A3:2018, EN 13445-3:2014+A4:2018
 EN 13445-4:2014+A1:2016, EN 13445-5:2014+A1:2018

General Information

Applicant — International Security & Safety System Co.,
 40, Abbas El Akkad Street,
 P.O. Box - 4058, Nasr City, Cairo, Egypt.

Manufacturer — Same as Above

Product Name — Bladder Tanks and Foam Systems Products

Product Description — EGY-CHBT/CVBT- Horizontal and Vertical Bladder Tanks Sizes (25-4500) Gal, EGY-FP- Foam Pump Skids Using Electric Motors, Diesel Driven Engines and Motor Turbine, all Foam Discharge Devices, Foam Chambers Foam Poppers Monitors, Sprinklers-Rescue-Extinguishers, etc.; Mobile Foam Units (Foam Carts and Special Foam Trailer) and Nitrogen Powered Foam Systems For Hazard areas such as (Petroleum Ware-Houses, Oil areas etc.)

Certificate Number: E6682546
 This certificate is valid from 08-Apr-2023 until 07-Apr-2028

This Certificate is issued under following conditions:
 The product is declared by the applicant as complying with the applicable directives. UR has performed a review of the technical information of the product. The applicant is required to inform UR of any changes to its product design and technical documentation. The CE mark may be used by the applicant, for this product, under the sole responsibility of the applicant.


 Certification Manager

UNIVERSAL REGISTRARS
 www.universalregistrars.com
 Level 18, 40 Bank Street,
 Canary Wharf, London E14 5NR, UK.
 Email ID: info@universalregistrars.com

This certificate can be verified at the above URL. The certificate remains the property of Universal Registrars, to whom it must be returned on request. Lack of fulfillment of certification terms and conditions at all times, may render this certificate invalid.

VERTICAL AND HORIZONTAL BLADDER TANKS EGY-CVBT/CHBT

The ISS Bladder Tank is one component in a balanced pressure foam proportioning system. It requires no external power, other than the water pressure to ensure correct operation. The bladder tanks are designed and constructed in accordance with the latest revisions of the ASME codes or optionally as per the European Community's pressure equipment directive (PED) and carry the CE marking with a working pressure of 175 psi (12 bar) and tested to 228 psi (15.7 bar) pressure.

SPECIFICATIONS

The tank shell is constructed of Carbon steel, The circumferential, as well as the longitudinal body seam, are machine welded. The tank interior welds and edges are ground smooth.

The tank shell water inlet and tank shell water drain is screened to prevent bladder blow out or the entrapment of debris between the tank shell and the bladder.

The horizontal tank assembly is supported on two saddles welded to the tank and fitted with anchoring holes allowing easy access to the bladder drain/fill valve and the tank shell drain/fill valve.

FEATURES

- UL listed .
- ASME - the AMERICAN SOCIETY OF MECHANICAL ENGINEERS.
- Option CE mark – constructed in accordance to EN 13445-2/3/4/5
- The bladder is manufactured of a vinyl based polymer.

Bladder material shall have an ASTM

D-412 Tensile Strength of at least 3000 psi and an ASTM D-624 Graves Tear Strength of at least 420 lbs./in.

- Tanks are supplied with foam concentrate discharge located at the top of the tank.
- Standard piping (vents and drains) material for non-prepiped tanks is stainless steel.
- All valves are labeled showing normal working position and function.
- Lifting lugs are permanently welded to the tank with eyes of approximately 2" diameter.
- Tanks contain a perforated PVC center tube that assures maximum agent discharge.
- All tanks are oversized to allow for any thermal expansion of the foam concentrate.
- All tanks are supplied with a label, which identifies the type of foam concentrate the system is designed for, the percentage ratio and the tank size.
- Tanks are painted red enamel.

OPTIONS

- Sight Glass.
- Red epoxy finish.
- Custom fabrication of specialty materials, dimensions, and capacities.
- Actuated valves for water/concentrate.
- Brass or carbon steel piping for non-prepiped tanks.
- Insulation and heat tracing packages.
- Seismic designed tanks available.

ORDERING INFORMATION

Please specify the following:

- Type of tank required - Horizontal or Vertical
- Size of tank
- Exterior finish of tank
- Whether required for salt water environment
- Any other options required

Below is the format for standard ISS Bladder Tanks:

Size: 25 to 4500 Gallon

Exterior Coating (Option 1):

- 01 – Red Enamel
- 02 – Red Epoxy
- 03 – Custom

Interior Coating (Option 2):

- 01 – Red Epoxy
- 02 – None

Foam Discharge Piping (Top) (Option 3):

- 01 – 316 SS Pipe/SS Valves
- 02 – Carbon Steel Pipe/Brass Valves
- 03 – Brass Pipe/Brass Valves

Trim Piping (Vent/Fill Piping) (Option 4):

- 01 – 316 SS Pipe/SS Valves
- 02 – Carbon Steel Pipe/Brass Valves
- 03 – Brass Pipe/Brass Valves

Sight Glass (Option 5):

- 01 – None (316 SS Trim Piping)
- 02 – None (Carbon Steel Trim Piping)
- 03 – None (Brass Trim Piping)
- 04 – PVC/SS Valve
- 05 – PVC/Brass Valve

Relief Valve (Option 6):

- 01 – None (316 SS Foam Discharge Piping)
- 02 – None (Carbon Steel Foam Discharge Piping)
- 03 – None (Brass Foam Discharge Piping)
- 04 – Thermal Relief Valve
- 05 – ASME (Full Flow), 316 SS Foam Discharge Piping
- 06 – ASME (Full Flow), Carbon Steel Foam Discharge Piping
- 07 – ASME (Full Flow), Brass Foam Discharge Piping

Vertical - Sample Part Number: EGY-CVBT-TD-1000-01-01-01-01-01

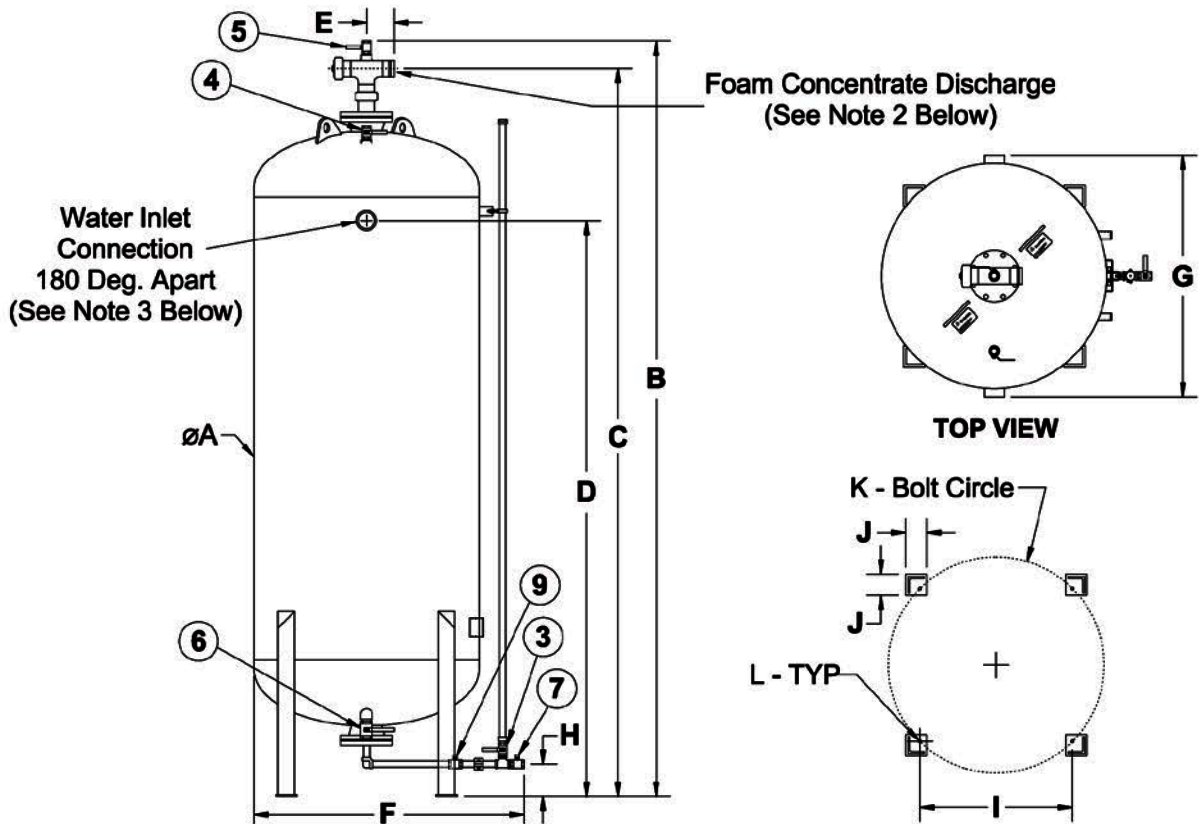
Horizontal - Sample Part Number: EGY-CHBT-TD-0200-01-01-01-01-01





VERTICAL BLADDER TANKS

OUTLINE DRAWING AND NORMAL VALVE POSITION CHART



VALVE DESCRIPTION		NORMAL VALVE POSITION	
Valve No.	Description	Manual System	Automatic System
1	Manual Foam Concentrate Shut-Off (Not Shown)	N.C.	N.O.
2	Water Supply Shut-Off (Not Shown)	N.C.	N.O.
3	Sight Gauge Shut-Off	N.C.	N.C.
5	Bladder Vent	N.C.	N.C.
6	Tank Shell Drain/Fill	N.C.	N.C.
7	Bladder Drain/Fill	N.C.	N.C.
8	Automatic Foam Concentrate Isolation (Not Shown)	-	N.C.
9	Fill Line Master Shut-Off	N.C.	N.C.

N.O. - Normally Open; N.C. - Normally Closed

NOTES:

- Dimensions are approximate and subject to change without notice.
- Foam concentrate discharge pipe size:
 - Tank sizes 25 - 450 gallon 2" NPT(F).
 - Tank sizes 500 - 4500 gallon 3" Grooved.
- Water inlet pipe size:
 - Tank sizes 25 - 450 gallon 2" NPT(F).
 - Tank sizes 500 - 4500 gallon 3" NPT(F).
- When designing a building to store bladder tanks, steps shall be taken to allow for removal of the internal center tube(s). Center tubes are the full length and/or height of the bladder tank.

Vertical Bladder Tanks - Standard Arrangement

Vertical Bladder Tank - Capacity Dimensions & Weight Chart

Capacity Gallons	Tank Dimensions - Millimeter												Approx. Wt. Kg.	Approvals
	Liters	A	B	C	D	E	F	G	H	I	J	K		
25	95	610	1339	1193	746	58	790	680	266	434	100	544	14.3	112
36	136	610	1508	1362	915	58	790	680	266	434	100	544	14.3	218
50	189	610	1711	1565	1093	58	790	680	266	434	100	544	14.3	256
75	284	610	1994	1848	1326	58	790	680	266	434	100	544	14.3	357
100	379	610	2449	2303	1781	58	790	680	266	434	100	544	14.3	393
150	568	915	2015	1869	1305	58	1077	985	266	590	114	833	14.3	503
200	757	915	2281	2135	1521	58	1077	985	266	590	114	833	14.3	581
250	946	915	2561	2415	1800	58	1077	985	266	590	114	833	14.3	659
300	1136	915	2867	2721	2006	58	1077	985	266	590	114	833	14.3	744
350	1325	915	3157	3011	2297	58	1077	985	266	590	114	833	14.3	862
400	1514	915	3462	3316	2602	58	1077	985	266	590	114	833	14.3	906
450	1703	915	3746	3600	2886	58	1077	985	266	590	114	833	14.3	1075
500	1893	1220	2953	2780	1951	83	1389	1300	275	590	114	833	14.3	1047
600	2271	1220	2383	3110	2281	83	1389	1300	275	590	114	833	14.3	1169
700	2650	1220	3588	3415	2586	83	1389	1300	275	590	114	833	14.3	1283
800	3028	1220	3917	3744	2915	83	1389	1300	275	590	114	833	14.3	1405
900	3407	1220	4248	4075	3246	83	1389	1300	275	590	114	833	14.3	1528
1000	3785	1220	4579	4400	3577	83	1389	1300	275	590	114	833	14.3	1650
1100	4164	1524	3721	3548	2625	83	1692	1604	250	590	114	833	14.3	1731
1200	4542	1524	3925	3751	2828	83	1692	1604	250	590	114	833	14.3	1831
1300	4921	1524	4130	3956	3033	83	1692	1604	250	590	114	833	14.3	1920
1400	5299	1524	4339	4165	3243	83	1692	1604	250	590	114	833	14.3	2014
1500	5678	1524	4572	4398	3475	83	1692	1604	250	590	114	833	14.3	2120
1600	6056	1829	3862	3688	2684	83	2002	1905	266	590	114	833	14.3	2224
1700	6435	1829	4002	3828	2823	83	2002	1905	266	590	114	833	14.3	2302
1800	6813	1829	2154	3980	2975	83	2002	1905	266	590	114	833	14.3	2387
1900	7192	1829	4595	4121	3116	83	2002	1905	266	590	114	833	14.3	2465
2000	7570	1829	4433	4259	3254	83	2002	1905	266	590	114	833	14.3	2542
2100	7949	2134	3756	3583	2507	83	2301	2361	244	590	114	833	14.3	2634
2200	8327	2134	3974	3800	2724	83	2301	2361	244	590	114	833	14.3	2774
2300	8706	2134	4075	3901	2825	83	2301	2361	244	590	114	833	14.3	2840
2400	9084	2134	4189	4015	2939	83	2301	2361	244	590	114	833	14.3	2914
2500	9463	2134	4290	4116	3040	83	2301	2361	244	590	114	833	14.3	2980
2600	9841	2134	4401	4225	3151	83	2301	2361	244	590	114	833	14.3	3046
2700	10220	2134	4508	4334	3258	83	2301	2361	244	590	114	833	14.3	3121
2800	10598	2134	4607	4433	3357	83	2301	2361	244	590	114	833	14.3	3186
2900	10977	2134	4708	4534	3458	83	2301	2361	244	590	114	833	14.3	3252
3000	11355	2134	4824	4650	3547	83	2301	2361	244	590	114	833	14.3	3327
3100	11734	2134	4925	4751	3675	83	2301	2361	244	590	114	833	14.3	3393
3200	12112	2134	5027	4853	3777	83	2301	2361	244	590	114	833	14.3	3464
3300	12491	2134	5142	4968	3892	83	2301	2361	244	590	114	833	17.5	3533
3400	12869	2134	5293	5069	3993	83	2301	2361	244	590	114	833	17.5	3599
3500	13248	2134	5344	5170	4094	83	2301	2361	244	590	114	833	17.5	3615
3600	13626	2134	5504	5330	4254	83	2301	2361	244	590	114	833	17.5	3739
3700	14005	2134	5561	5387	4311	83	2301	2361	244	590	114	833	17.5	3806
3800	14383	2134	5664	5440	4414	83	2301	2361	244	590	114	833	17.5	3871
3900	14762	2134	5775	5601	4525	83	2301	2361	244	590	114	833	17.5	3945
4000	15140	2134	5878	5704	4628	83	2301	2361	244	590	114	833	17.5	4012
4100	15519	2134	5979	5805	4729	83	2301	2361	244	590	114	833	17.5	4101
4200	15897	2134	6080	5906	4830	83	2301	2361	244	590	114	833	17.5	4173
4300	16276	2134	6181	6007	4931	83	2301	2361	244	590	114	833	17.5	4250
4400	16654	2134	6295	6121	5045	83	2301	2361	244	590	114	833	17.5	4327
4500	17033	2134	6396	6222	5176	83	2301	2361	244	590	114	833	17.5	4436



as per



or

ASME

as per



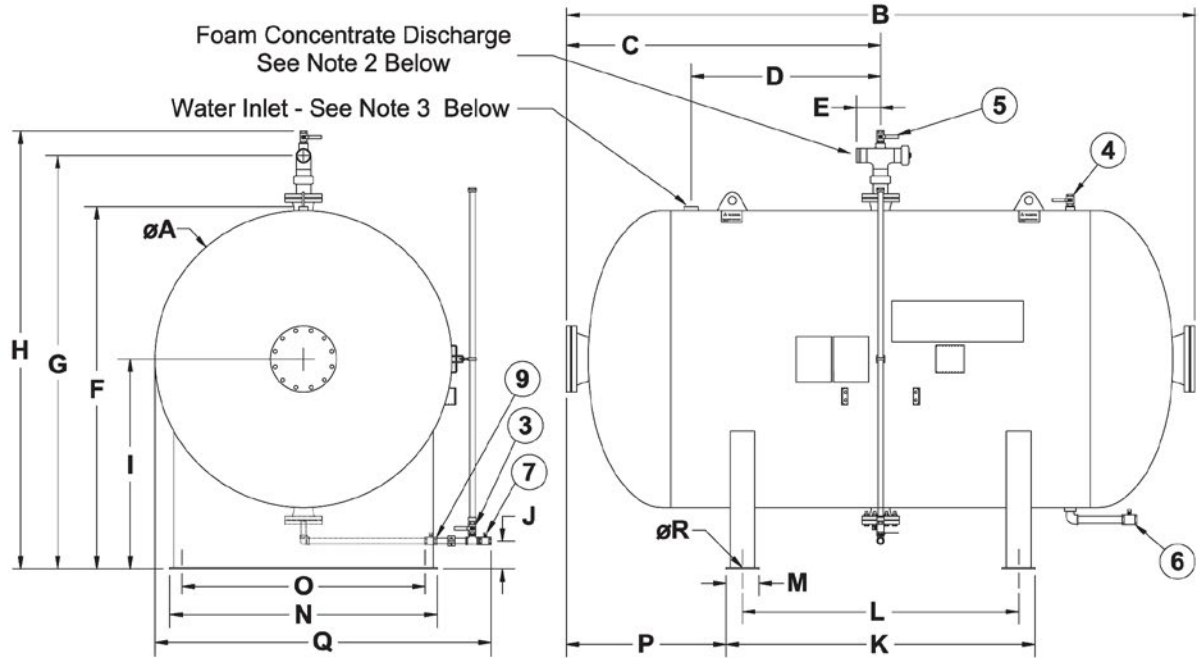
or

ASME



HORIZONTAL BLADDER TANKS

OUTLINE DRAWING AND NORMAL VALVE POSITION CHART



VALVE DESCRIPTION		NORMAL VALVE POSITION	
Valve No.	Description	Manual System	Automatic System
1	Manual Foam Concentrate Shut-Off (Not Shown)	N.C.	N.O.
2	Water Supply Shut-Off (Not Shown)	N.C.	N.O.
3	Sight Gauge Shut-Off	N.C.	N.C.
4	Tank Shell Vent	N.C.	N.C.
6	Tank Shell Drain/Fill	N.C.	N.C.
7	Bladder Drain/Fill	N.C.	N.C.
8	Automatic Foam Concentrate Isolation (Not Shown)	-	N.C.
9	Fill Line Master Shut-Off	N.C.	N.C.

N.O. - Normally Open; N.C. - Normally Closed




NOTES:

- Dimensions are approximate and subject to change without notice.
- Foam concentrate discharge pipe size:
 - Tank sizes 100 - 450 gallon..... 2" NPT(F).
 - Tank sizes 500 - 4500 gallon..... 3" Grooved.
- Water inlet pipe size:
 - Tank sizes 100 - 450 gallon..... 2" NPT(F).
 - Tank sizes 500 - 4500 gallon..... 3" NPT(F).
- When designing a building to store bladder tanks, steps shall be taken to allow for removal of the internal center tube(s). Center tubes are the full length and/or height of the bladder tank.
- *Dimension E:** For tanks 500 gallons (1.893 Liters) and Large, Dimension E is 8 in (203.2 mm) when brass foam piping is used.

Horizontal Bladder Tanks - Standard Arrangement

Horizontal Bladder Tanks - Capacity Dimensions & Weight Chart

Tank Dimensions - Millimeter

Capacity Gallons	Tank Dimensions - Millimeter																	Approx. Wt. Kg.	Approvals		
	Liters	A	B	C	D	E	F	G	H	I	J	K	L	M	N	O	P			Q	R
100	379	610	1888	957	581	58	839	1021	1141	534	68	1080	966	114	570	355	417	766	14.3	393	as per  UL LISTED as per  CE or  ASME
150	568	915	1454	727	293	58	1146	1328	1448	689	70	585	458	127	848	610	434	1070	14.3	503	
200	757	915	1720	860	426	58	1146	1328	1448	689	70	740	613	127	848	610	490	1070	14.3	581	
250	946	915	1999	1006	572	58	1146	1328	1448	689	70	907	780	127	848	610	546	1070	14.3	659	
300	1136	915	2318	1159	725	58	1146	1328	1448	689	70	1103	376	127	848	610	607	1070	14.3	744	
350	1325	915	2596	1298	864	58	1146	1328	1448	689	70	1270	1143	127	848	610	663	1070	14.3	862	
400	1514	915	2913	1457	1022	58	1146	1328	1448	689	70	1465	1338	127	848	610	724	1070	14.3	906	
450	1703	915	3197	1598	1164	58	1146	1328	1448	689	70	1637	1510	127	848	610	780	1070	14.3	1075	
500	1893	1220	2310	1155	635	84	1451	1675	1822	481	65	1009	882	127	1127	915	651	1377	17.5	1047	
600	2271	1220	2678	1339	819	84	1451	1675	1822	481	65	1247	1120	127	1127	915	716	1377	17.5	1169	
700	2650	1220	2949	1476	952	84	1451	1675	1822	481	65	1394	1267	127	1127	915	779	1377	17.5	1283	
800	3028	1220	3312	1656	1136	84	1451	1675	1822	481	65	1625	1498	127	1127	915	844	1377	17.5	1405	
900	3407	1220	3605	1802	1282	84	1451	1675	1822	481	65	1784	1657	127	1127	915	911	1377	17.5	1528	
1000	3785	1220	3974	1987	1764	84	1451	1675	1822	481	65	2023	1896	127	1127	915	976	1377	17.5	1650	
1100	4164	1524	3104	1552	939	84	1757	1981	2128	995	65	1379	1252	127	1381	1168	863	1681	17.5	1731	
1200	4542	1524	3308	1654	1041	84	1757	1981	2128	995	65	1464	1337	127	1381	1168	903	1681	17.5	1831	
1300	4921	1524	3513	1756	1144	84	1757	1981	2128	995	65	1617	1490	127	1381	1168	948	1681	17.5	1920	
1400	5299	1524	3722	1861	1248	84	1757	1981	2128	995	65	1676	1799	127	1381	1168	988	1681	17.5	2014	
1500	5678	1524	3955	1977	1365	84	1757	1981	2128	995	65	1891	1764	127	1381	1168	1032	1681	17.5	2120	
1600	6056	1829	3225	1612	918	84	2066	2290	2437	1149	65	1431	1304	127	1643	1422	936	1922	20.6	2224	
1700	6435	1829	3365	1682	988	84	2066	2290	2437	1149	65	1521	1394	127	1643	1422	998	1922	20.6	2302	
1800	6813	1829	3517	1758	1064	84	2066	2290	2437	1149	65	1608	1487	127	1643	1422	1025	1922	20.6	2387	
1900	7192	1829	3658	1829	1134	84	2066	2290	2437	1149	65	1690	1563	127	1643	1422	1053	1922	20.6	2465	
2000	7570	1829	3796	1898	1203	84	2066	2290	2437	1149	65	1795	1629	127	1643	1422	1076	1922	20.6	2542	
2100	7949	2134	3141	1570	804	84	2468	4691	2838	1339	65	1424	1092	203	2001	1676	923	2414	20.6	2634	
2200	8327	2134	3358	1679	913	84	2468	4691	2838	1339	65	1495	1221	203	2001	1676	967	2414	20.6	2774	
2300	8706	2134	3459	1730	964	84	2468	4691	2838	1339	65	1485	1282	203	2001	1676	987	2414	20.6	2840	
2400	9084	2134	3573	1787	1021	84	2468	4691	2838	1339	65	1553	1350	203	2001	1676	1010	2414	20.6	2914	
2500	9463	2134	3674	1837	1071	84	2468	4691	2838	1339	65	1614	1411	203	2001	1676	1030	2414	20.6	2980	
2600	9841	2134	3785	1893	1127	84	2468	4691	2838	1339	65	1683	1480	203	2001	1676	1051	2414	27	3046	
2700	10220	2134	3892	1946	1180	84	2468	4691	2838	1339	65	1746	1543	203	2001	1676	1073	2414	27	3121	
2800	10598	2134	3991	1996	1230	84	2468	4691	2838	1339	65	1805	1602	203	2001	1676	1093	2414	27	3186	
2900	10977	2134	4092	2046	1280	84	2468	4691	2838	1339	65	1864	1661	203	2001	1676	1114	2414	27	3252	
3000	11355	2134	4208	2104	1338	84	2468	4691	2838	1339	65	1934	1737	203	2001	1676	1137	2414	27	3327	
3100	11734	2134	4309	2155	1389	84	2468	4691	2838	1339	65	1993	1790	203	2001	1676	1158	2414	27	3393	
3200	12112	2134	4411	2206	1440	84	2468	4691	2838	1339	65	2055	1852	203	2001	1676	1178	2414	27	3464	
3300	12491	2134	4526	2263	1497	84	2468	4691	2838	1339	65	2124	1921	203	2001	1676	1201	2414	27	3533	
3400	12869	2134	4627	2314	1548	84	2468	4691	2838	1339	65	2185	1982	203	2001	1676	1221	2414	27	3599	
3500	13248	2134	4728	2364	1598	84	2468	4691	2838	1339	65	2246	2043	203	2001	1676	1241	2414	27	3615	
3600	13626	2134	4843	2422	1656	84	2468	4691	2838	1339	65	2317	2114	203	2001	1676	1263	2414	27	3739	
3700	14005	2134	4907	2473	1707	84	2468	4691	2838	1339	65	2339	2136	203	2001	1676	1284	2414	27	3806	
3800	14383	2134	5048	2524	1758	84	2468	4691	2838	1339	65	2438	2235	203	2001	1676	1305	2414	27	3871	
3900	14762	2134	5159	2580	1814	84	2468	4691	2838	1339	65	2503	2306	203	2001	1676	1328	2414	27	3945	
4000	15140	2134	5262	2631	1865	84	2468	4691	2838	1339	65	2566	2363	203	2001	1676	1348	2414	27	4012	
4100	15519	2134	5372	2686	1922	84	2468	4691	2838	1339	65	2632	2438	203	2001	1676	1370	2414	27	4101	
4200	15897	2134	5482	2741	1979	84	2468	4691	2838	1339	65	2698	2513	203	2001	1676	1392	2414	27	4173	
4300	16276	2134	5592	2796	2036	84	2468	4691	2838	1339	65	2764	2588	203	2001	1676	1414	2414	27	4250	
4400	16654	2134	5702	2851	2093	84	2468	4691	2838	1339	65	2830	2663	203	2001	1676	1436	2414	27	4327	
4500	17033	2134	5812	2906	2150	84	2468	4691	2838	1339	65	2896	2738	203	2001	1676	1458	2414	27	4436	

UL Listed Foam Concentrates



Blended FP/AFFF/AR-AFFF in Egypt

- 1% AFFF, Model: EGY 1% AFFF
- 3% AFFF, Model: EGY 3% AFFF
- 6% AFFF, Model: EGY 6% AFFF
- 1% x 1% AR-AFFF, Model: EGY 1x1 AR-AFFF
- 1% x 3% AR-AFFF, Model: EGY 1x3 AR-AFFF
- 3% x 3% AR-AFFF, Model: EGY 3x3 AR-AFFF
- 3% x 6% AR-AFFF, Model: EGY 3x6 AR-AFFF
- 3% FP, Model: EGY 3% FP
- 6% FP, Model: EGY 6% FP
- 3% FFFP, Model: EGY 3% FFFP
- 6% FFFP, Model: EGY 6% FFFP
- 3% x 3% AR-FFFP, Model: EGY 3x3 AR-FFFP
- 3% x 6% AR-FFFP, Model: EGY 3x6 AR-FFFP

FIRECHEM

- Non-Fluorinated NFF 3x3 UL201
- Non-Fluorinated NFF-331 3x3 AR-SFFF

CHEMGUARD



EGY-CHBT
(25 - 3000) Gal.

THE FIRST



BLADDER TANK
IN EGYPT



EGY-CVBT
(100 - 4500) Gal.

10/1/25, 4:42 PM

GFGV,EX6202 - Foam Liquid Concentrates | UL Product iQ

UL Product iQ®



Foam Liquid Concentrates

COMPANY

INTERNATIONAL SECURITY & SAFETY SYSTEMS CO-S A E
AL OBOUR INDUSTRIAL CITY
ZONE A (BLK 13040)
Cairo, Egypt

EX6202

View model for additional information

Alcohol Resistant Aqueous Film Forming Foam (AR-AFFF), Low-expansion Foam Liquid Concentrate(s): [3%x3% AR-AFFF EGY-C334-LV](#), [3%x6% AR-AFFF EGY-C364](#), [EGY 1x1 AR-AFFF](#), [EGY 1x3 AR-AFFF](#), [EGY 3x3 AR-AFFF](#), [EGY 3x6 AR-AFFF](#)

Alcohol Resistant Film Forming Fluoroprotein (AR-FFFP), Low-expansion Foam Liquid Concentrate(s): [EGY 3x3 AR-FFFP](#), [EGY 3x6 AR-FFFP](#)

Aqueous Film Forming Foam (AFFF), Low-expansion Foam Liquid Concentrate(s): [3% AFFF EGY-C3B](#), [6% AFFF EGY-C6B](#), [EGY 1% AFFF](#), [EGY 3% AFFF](#), [EGY 6% AFFF](#)

Film Forming Fluoroprotein (FFFP), Low-expansion Foam Liquid Concentrate(s): [EGY 3% FFFP](#), [EGY 6% FFFP](#)

Fluoroprotein, Low-expansion Foam Liquid Concentrate(s): [EGY 3 % FP](#), [EGY 6 % FP](#)

Last Updated on 2025-05-19

The appearance of a company's name or product in this database does not in itself assure that products so identified have been manufactured under UL Solutions' Follow - Up Service. Only those products bearing the UL Mark should be considered to be Certified and covered under UL Solutions' Follow - Up Service. Always look for the Mark on the product.


UL Solutions permits the reproduction of the material contained in Product iQ subject to the following conditions: 1. The Guide Information, Assemblies, Constructions, Designs, Systems, and/or Certifications (files) must be presented in their entirety and in a non-misleading manner, without any manipulation of the data (or drawings). 2. The statement "Reprinted from Product iQ with permission from UL Solutions" must appear adjacent to the extracted material. In addition, the reprinted material must include a copyright notice in the following format: "©2025 UL LLC."

<https://iq.ulprospector.com/en/profile?e=6194875>

1/1

Foam Systems and Products



 Ratio Flow Controller



In-line Foam Eductors



Hydraulic Concentrate Control Valve



 Foam Chamber




Self-Educting Foam Nozzles



P80 Series Foam Concentrate Pump



 Rim Seal Foam Pourer



Water Powered High Expansion Foam Generator



Hose Reel Foam Station



Water Powered Oscillating Monitors



JACKRABBIT Dual-Inlet Monitors



Precision Foam Test Kit

ISS - Locally Manufactured Foam Products - CE mark (option)



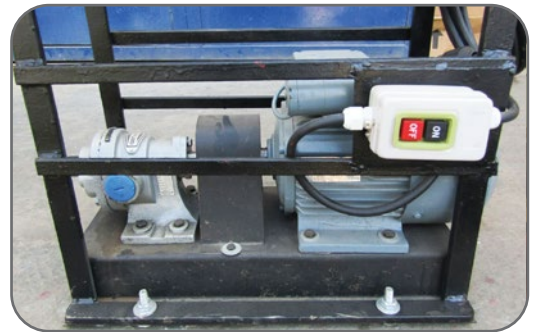
Foam Pump Skids



Custom Made Foam trailers Foam



Automatic Oscilating Mobile Monitor



Foam Filling Pump



Bladder Tanks Shipment



Medium Expansion Nozzles



Pre-piped Bladder Tank Stations



Remotely Controlled



Special Fire Trucks



Foam Hose Cabinets



Fiberglass, SS and Carbon Steel
Mobile Foam Cart



2"- 6" Foam Chambers

Foam Systems Projects

TCI SANMAR - PORT SAID



18000 gpm - Fire Fighting Pump Station consists of 3x 5000gpm Diesel Pumps and 2x 1500gpm Electric pumps.



Water & Foam Monitors around the whole Factory.



2x Foam Pump Stations ,one with 2x electric foam pumps skid unit and 2x diesel foam pumps skid unit , each with 20 m3 - 3%AR-AFFF foam concentrate in two atmospheric tanks.



Manual and automatic operation of a cooling System for VCM-Pressurized gas spheres.



Mimic Diagram and computer graphic package for Fire & Gas Detection system.



Manual and automatic operation of a Fire Protection system using (water/foam) systems for EDC and Methanol Tanks.

AI - KHARAFI INTERNATIONAL



Tank foam test at Ismalia Power Station using AFFF Foam.

50 GAL. BLADDER TANK STATION



Manufactured and supplied 5x 50gal. bladder tanks , ready for connection on site to existing fire water piping.

AGIBA PETROLEUM



Turn Key project for three AGIBA CO. west desert sites (Fire Water Tanks, 2x Diesel Fire Pumps, Tank Foam Systems, Fire Hydrant).

GPC - HELIPAD - RAS GHARB



Using large premix self contained foam units (5000 lit size) to protect helipad - when no fire pump exist.

ALEX TERMINAL - ALEXANDRIA



Large FireDos admixing systems (deliver 15000 LPM), using water driven pumps to protect tank & dike area.

FABRICATION OF BLADDER TANK



At ISS AL-Obour industrial area factory, the automatic welding machine / manipulator for UL diesel tanks and bladder tanks welding.



Products Sold to:

-  Saudi Arabia
-  Sudan
-  Libya
-  Djibouti
-  UAE
-  Qatar
-  Morocco
-  Tunisia
-  Greece
-  Indonesia
-  Romania

HEAD OFFICE :

49 Abbas El Akkad st. - Nasr City - Cairo - Egypt

Tel : +202 (24017430 - 22602808)

Fax : +202 (22627317)

FACTORY :

Al Obour Industrial Area Block 13040 - Zone A

E-mail : info@issystems.com

www.issystems.com